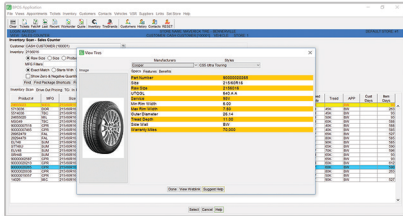


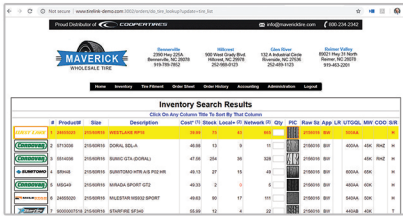


Wholesale Tire Distributor Software & E-Commerce



Simple Billing & Order Tracking

In wholesale tire distribution, time is money! That is why HITS has been designed to be a simple, fast, and efficient order entry and billing system.



Robust Inventory Management

The programming code that contains the HITS inventory functionality has been a stable workhorse for thirty-plus years. Track and audit your inventory with confidence, ease, and accuracy with HITS inventory management.

Real-Time E-Commerce

The HITS Tirelink e-Commerce platform is one of the few real-time tire e-Commerce systems on the market. The billing & inventory system accesses the same database as the e-Commerce, so all inventory, pricing, and customer accounts are live in real-time.

Simple & Enhanced Pricing Management

Regardless of how simple or how complex your pricing strategy, HITS has you covered! Whether you maintain universal price levels, create customer pricing "templates," price profile customers individually, or even set customer "contract" pricing by item, HITS pricing functionality is extremely flexible.

Cloud-Based, Enterprise System

HITS is a cloud-based, enterprise system meaning NO local server, NO network, & NO remote desktop is needed to run the system. HITS simplifies IT by providing enterprise, real-time computing. Data backups and updates are automated.

Data Hub and Integrations

As a cloud-based, enterprise system, HITS serves as a perfect central data hub for external sales integrations. As the wholesale tire distribution web continues to evolve, you can have confidence that our Simple Tire, Tire Connect, AMI (AutoMed), etc. integrations will continue to deliver your data to all established endpoints on a reliable, consistent schedule.

Management & Sellout Reporting

HITS contains an extensive library of reports for analyzing sales trends, inventory, A/R, and salesrep commissions. In addition to the management reports, HITS provides manufacturer sellout reporting for industry leading manufacturers.

Embedded A/R & Credit Management

HITS contains a simple and complete Accounts Receivable (A/R) module that provides real-time consolidated A/R and credit management. Payments posted at any location are reflected across the entire enterprise in real-time.

Batch Accounting / ERP Integration

HITS is integrated with the leading accounting systems such as QuickBooks, Sage, Great Plains, Mas90, and more through the Accounting Link integration. The Accounting Link is a batch integration that allows Bookkeeping staff to validate data before importing into the accounting system.



✔ Online Training Courses, ✔ Data Conversion, ✔ Dedicated Setup Project Manager.

✘ NO Contracts. ✘ NO Commissioned Salesreps. ✘ NO Pressure.